

S
THE PLAY
THAT GOES
WRONG



BROADWAY 2018
2019



THE MURDER AT HAVERSHAM MANOR

CAST

INSPECTOR CARTER - **CHRIS BEAN**
CHARLES HAVERSHAM - **JONATHAN HARRIS**
THOMAS COLLEYMOORE - **ROBERT GROVE**
PERKINS - **DENNIS TYDE**
FLORENCE COLLEYMOORE - **SANDRA WILKINSON**
CECIL HAVERSHAM - **MAX BENNETT**
ARTHUR THE GARDENER - **MAX BENNETT**

CREATIVE

WRITER - **SUSIE H.K. BRIDESWELL**
PRODUCER - **WAYNE BLEXT**
DIRECTOR - **CHRIS BEAN**
DESIGNER - **CHRIS BEAN**
COSTUME DESIGNER - **CHRIS BEAN**
PROP MAKER - **CHRIS BEAN**
BOX OFFICE MANAGER - **CHRIS BEAN**
PRESS & PR - **CHRIS BEAN**
DRAMATURGY - **CHRIS BEAN**
VOICE COACH - **CHRIS BEAN**
DIALECT COACH - **CHRIS BEAN**
FIGHT CHOREOGRAPHER - **CHRIS BEAN**
REHEARSAL ROLE 'MR FITZROY' - **CHRIS BEAN**
STAGE MANAGER - **ANNIE TWILLOIL**
LIGHTING & SOUND OPERATOR - **TREVOR WATSON**

THIS PRODUCTION WAS MADE POSSIBLE BY THE BRITISH-AMERICAN
CULTURAL EXCHANGE PROGRAM

A LETTER FROM THE PRESIDENT

Hello and welcome to *The Murder at Haversham Manor*.

We are thrilled that the Cornley University Drama Society is performing in the USA. We can only apologise to those involved in the production of *Equus* originally scheduled for this week, which due to a clerical error, is now being performed in the Cornley University Gymnasium. We hope there are no hard feelings and we've left the vaulting horse out for you. The question everyone at Cornley has been asking is: are we ready for a venue of this size? The answer is "yes." The cast and I rehearsed for weeks using only the best acting teachings to inspire us. We read that Sanford Meisner once said, "Acting is behaving truthfully," so we immediately changed all the names in the play to our own names and cut the murder, the manor house setting and any other element that we hadn't personally experienced. We then found the piece rather flat, and it only ran at 17 minutes. So we went back to the Meisner book and we realized the full quote was in fact: "Acting is behaving truthfully... under imaginary circumstances," so we reinstated the cuts and we were then quickly back on track.

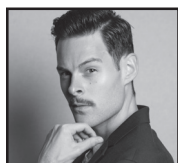
We found the teachings of Michael Chekhov less confusing. He says, "An actor has to burn inside with an outer ease." So that evening it was vindaloos all round at the Sunam Balti House on Cornley High Street. However, try as we did to not react to our burning insides, it was certainly noticeable that we were all in significant discomfort, which just goes to show how tough acting can be. At the end of the evening, Dennis was actually sick in the restaurant bathrooms. We always knew he was one of the weaker actors.

All this hard work and preparation has left us with an ensemble piece that has achieved such critical acclaim as "VERY INTERESTING" from Mr. Harwood, esteemed head of Design Technology at Cornley University, and "RATHER UNSETTLING" from real-life police chief Mr. Greaves of the Cornley Volunteer Police Force. I'm sure that with a full audience, the piece will truly bring down the house.

CHRIS BEAN

President of the Cornley University Drama Society &
Director of *The Murder at Haversham Manor*



**CHRIS BEAN**INSPECTOR CARTER &
DIRECTOR

Touring debut! Chris is the newly elected head of the Drama Society. For tonight's show, he served as the voice coach, dialect coach, fight choreographer, casting director and costume designer. He also plays the lead role and, of course, directed. The Society would like to thank Chris for his remarkable passion and efforts. Credits within the University: *Hamlet* in *Hamlet*, *Macbeth* in *Macbeth* and *Othello* in *Othello*.

**ROBERT GROVE**

THOMAS COLLEYMOORE

Touring debut! A member of the Cornley Drama Society for three years, Robert uses the Stanislavsky method. Credits include: *Lame Horse* in *Black Beauty*, *Victorian Policeman* in *Madame Tussauds Chamber of Horror – Live!*, *Dopey* in *Snow White* and *The Tall Broad Gentlemen* and *Augustus Gloop* in *Charlie & The Chocolate Factory*. Robert's next performance will be as *Godot* in a newly self-written sequel to Beckett's classic.

**JONATHAN HARRIS**

CHARLES HAVERSHAM

Touring debut! Jonathan works as a model and is therefore excited to learn transferrable skills by appearing in *The Murder at Haversham Manor*. He is no stranger to acting and appeared in *Casualty* when he was just five years old. Jonathan also performed with Emote, another local theatre company, in *A Midsummer Night's Stamina*, which featured a cast of fourteen pedalling exercise bikes for the full 2-hour performance.

**SANDRA WILKINSON**

FLORENCE COLLEYMOORE

Touring debut! This is Sandra's eleventh season with the Cornley University Drama Society, during which she has proudly performed roles such as *Snow White* in *Snow White* and *The Tall Broad Gentlemen*, *Virginia Woolf* in *Who's Afraid of Virginia Woolf?* and *The Cow* in *Jack and The Bean*. Sandra has been performing from a very young age, since her mother appeared in *A Winter's Tale* pregnant.

**MAX BENNETT**

CECIL HAVERSHAM

Touring debut! Max is in his first year at Cornley University where he is studying human geography and crime. He is an avid fan of films, and his favourite is *The Legend of Bagger Vance*, which he's seen 27 times. This is Max's first production with the Drama Society, and he is very glad to have donated a large portion of his recent inheritance to help the show reach Broadway.

**DENNIS TYDE**

PERKINS

Touring debut! After failing the tryouts for the football, cricket, volleyball and basketball teams, Dennis decided to join the Drama Society. Dennis does not live in the Cornley halls of residence and commutes in daily from his parents' house. He hopes the Society will give him the chance to meet like-minded people. Dennis' only stage credit dates back to 1995 when he appeared in his primary school nativity. Credit: *Shepherd*.

**ANNIE TWILLOIL**

STAGE MANAGER

Touring debut! The unsung hero of the Society, Annie has designed, built, painted, stage managed and costumed every single Society show in the last three years. Her hard work and dogged determination behind-the-scenes lies behind so much of the Society's success. After *The Murder at Haversham Manor*, Annie will begin an internship at the Oregon Shakespeare Festival.

**TREVOR WATSON**LIGHTING & SOUND
OPERATOR

Touring debut! Trevor is only participating in *The Murder at Haversham Manor* to earn much needed extra credit for his electronics module in order to pass his engineering course at Cornley University. Once he has passed the course, he will not continue to work with the Drama Society. Trevor credits his success to his sunny disposition and his positive outlook on life.

Robert Grove's School For Acting Perfectly

Do you cry out into the void,

"I WISH TO ACT!"?

I can hear you.

I teach the four approved acting skills:

Reacting, Gesturing, Emotioning and Acting



For more information on my courses, contact me via Twitter
@RobertGoodActor



AT A LOSS FOR WORDS? WE'RE HAPPY TO HELP!

WORDS TO USE:

Good, best, awesome, exciting, inspiring, lovely, important,
worthwhile, tasteful, tasty, professional, proportionate,
rare, well-done, like-a-warm-bath

WORDS NOT TO USE:

Bad, worst, awful, excreting, perspiring, drab, impotent,
worthless, tasteless, icky, amateurish, error, eek, queasy,
vomit, dry, moist



#BwayGoesWrong

KEVIN McCOLLUM J.J. ABRAMS KENNY WAX STAGE PRESENCE LTD. CATHERINE SCHREIBER
KEN DAVENPORT DOUBLE GEMINI PRODUCTIONS /DeROY BRUNISH
DAMIAN ARNOLD/TC BEECH GREENLEAF PRODUCTIONS/BARD ROTH
MARTIAN ENTERTAINMENT/JACK LANE/JOHN YONOVER LUCAS McMAHON

PRESENT
A MISCHIEF THEATRE PRODUCTION OF

THE PLAY THAT GOES WRONG

BY HENRY LEWIS, JONATHAN SAYER AND HENRY SHIELDS

STARRING

SCOTT COTE PEYTON CRIM BRANDON J. ELLIS ANGELA GROVEY
NED NOYES JAMIE ANN ROMERO EVAN ALEXANDER SMITH YAGEL T. WELCH
BLAIR BAKER JACQUELINE JARROLD SID SOLOMON MICHAEL THATCHER

SCENIC DESIGN

NIGEL HOOK

COSTUME DESIGN

ROBERTO SURACE

LIGHTING DESIGN

RIC MOUNTJOY

SOUND DESIGN

ANDREW JOHNSON

ORIGINAL MUSIC

ROB FALCONER

PRODUCTION STAGE MANAGER

JEFF NORMAN

PRODUCTION MANAGEMENT

DAVID BENKEN

UK PRODUCTION MANAGEMENT

DIGBY ROBINSON

GENERAL MANAGEMENT

BESPOKE THEATRICALS

MARKETING SERVICES

BDB MARKETING

TOUR MARKETING & PRESS

ALLIED TOURING

TOUR BOOKING AGENCY

THE BOOKING GROUP

TOUR DIRECTED BY

MATT DICARLO

ORIGINAL BROADWAY DIRECTION BY

MARK BELL

THE PLAY THAT GOES WRONG WAS ORIGINALLY PRESENTED BY MISCHIEF THEATRE AT THE OLD RED LION THEATRE, LONDON.
EXECUTIVE DIRECTOR DAMIEN DEVINE, ASSOCIATE DIRECTOR NICK THOMPSON

(in order of appearance)

Trevor.....	BRANDON J. ELLIS
Chris	EVAN ALEXANDER SMITH
Jonathan.....	YAEGL T. WELCH
Robert.....	PEYTON CRIM
Dennis	SCOTT COTE
Sandra	JAMIE ANN ROMERO
Max.....	NED NOYES
Annie	ANGELA GROVEY

UNDERSTUDIES

Swings and understudies never substitute for listed performers unless a specific announcement is made at the time of the appearance.

for Trevor—MICHAEL THATCHER, YAEGL T. WELCH
for Chris—SID SOLOMON
for Jonathan—SID SOLOMON, MICHAEL THATCHER
for Robert—BRANDON J. ELLIS, MICHAEL THATCHER
for Dennis and Max—SID SOLOMON, MICHAEL THATCHER
for Sandra and Annie—BLAIR BAKER, JACQUELINE JARROLD

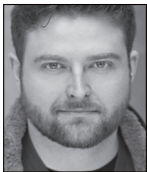
THERE WILL BE ONE 15 MINUTE INTERMISSION.



SCOTT
COTE



PEYTON
CRIM



BRANDON J.
ELLIS



ANGELA
GROVEY



NED
NOYES



JAMIE ANN
ROMERO



EVAN ALEXANDER
SMITH



YAEGL T.
WELCH



BLAIR
BAKER



JACQUELINE
JARROLD



SID
SOLOMON



MICHAEL
THATCHER



The photographing or sound recording of any performance or the possession of any device or such photographing or sound recording inside this theater, without the written permission of the management, is prohibited by law. Violators may be punished by ejection and violations may render the offender liable for money damages.

SCOTT COTE (*Dennis*). National tours: *Something Rotten!*, *Chitty Chitty Bang Bang*. Regional credits: *The Producers* (Paper Mill Playhouse), *Guys and Dolls* (Goodspeed), *Noises Off* (Pittsburgh Public), *Lend Me a Tenor* (Bay Street), *The Music Man* (Flat Rock Playhouse), *Boeing Boeing* (Northern Stage), *The Drowsy Chaperone* (Human Race Theatre).

PEYTON CRIM (*Robert*). New York: *Brigadoon* (City Center Encores!), *Finian's Rainbow*, *On a Clear Day...* (Irish Rep.) Selected regional: *Mary Poppins* (Paper Mill Playhouse), *Sweeney Todd* (The Gateway Playhouse), *Sunset Blvd.* (Music Theatre West), *The Music Man*, *Peter Pan*, *Ring of Fire*. Graduate of Oklahoma City University. Instagram: MrPeytonCrim. Twitter: TheRealPeytonC.

BRANDON J. ELLIS (*Trevor*, *u/s Robert*). Broadway: *Bandstand*, *Once*, *Company*. West End: *Once*. Off-Broadway: *Of Mice and Men*, *Balls: The Musical?* (Writer). TV/film: "Iron Fist," "Dietland," "Vinyl," "30 Rock," "The Naked Brothers Band," "She Wolf Rising," "The Ferryman." B.F.A. acting, UNC-Greensboro. Love to Mom, Jenn, Austin. "For my Dad." Proud AEA.

ANGELA GROVEY (*Annie*). Broadway: *Escape to Margaritaville*, *Leap of Faith*. National tour: *Newsies* (Medda). Film/TV: "High Maintenance," "Ray Donovan," "Kimmy Schmidt," "Iron Fist," "Joyful Noise," "30 Rock," "The Unusuals." Some theater: Irish Rep, City Center Encores, *Radio City Christmas Spectacular*, Chicago Shakespeare, Vineyard, Paper Mill, Goodspeed. Insta@angelagrovey. Twitter: @angelagrovey. angelagrovey.com.

NED NOYES (*Max*). Broadway: *The Play That Goes Wrong*, *You Can't Take It with You*. National tour: *Cabaret* (Roundabout). Off-Broadway: Mint Theatre (four productions). Regional: Steppenwolf Theatre, McCarter Theatre, Shakespeare Theatre (D.C.), Chicago Shakespeare Theatre (among others). Film: *The Post* (directed by Steven Spielberg). TV: "Boardwalk Empire," "Alpha House." Training: Northwestern University.

JAMIE ANN ROMERO (*Sandra*). Off-Broadway: Second Stage Theater. Regional: Paper Mill Playhouse, Oregon Shakespeare Festival, Denver Center Theatre Company, Utah Shakespeare Festival, Colorado Shakespeare Festival, Arvada Center. International: Maxim Gorky Theatre Vladivostok, Russia. Television: "The Punisher," "House of Cards." Film: *Viper Club*. Love and thanks to Benjamin and my family. Insta: @annjamie www.jamieannromero.com

EVAN ALEXANDER SMITH (*Chris*). Broadway: *Amazing Grace*. National tour: *Dirty Dancing* (Robbie). Selected regional: *The Toxic Avenger* (Title role, Toronto Company), *Joseph...* (Joseph, Drury Lane Theatre), *Baskerville* (Cleveland Play House/Cincinnati Playhouse), *Ragtime* (Younger Brother), *Lady Windermere's Fan* (Shaw Festival.) More info and complete credits at EvanAlexanderSmith.com. Thanks to HCKR. Love to Sarah. Twitter/Instagram: @iamevansmith.

YAEGEL T. WELCH (*Jonathan*, *u/s Trevor*). Lincoln Center, The Acting Company, Signature Theatre Company, Seattle Rep, Playmakers, True Colors/Alliance Theatre, Studio Theatre, Everyman Theatre (Company Member). TV/film: "Blacklist," "Blue Bloods," "Madame Secretary," "The Knick." Education: B.A. Morehouse College; M.F.A. Brandeis University; M.F.A. Academy for Classical Acting. In: yaegelwelch. Twit: @yaegelwelch.

BLAIR BAKER (*Understudy*). Thrilled to join TPTGW! Credits: *The Humans* (Broadway, Roundabout), *Oleanna* (Broadway, CTG), title role in *Hamlet* (SheNYC), *The Soap Myth* (opposite Ed Asner), *Chapter Two* (directed by Marsha Mason). blairbaker.info. @blairbaker.

JACQUELINE JARROLD (*Understudy*). Broadway: *The Cherry Orchard*. Regional: The Shakespeare Theatre of D.C. Back in New York, Jacqui makes her artistic home with AmiosNYC. Training: Northwestern University. More at jacquelinejarrold.com.

SID SOLOMON (*Understudy*) received his training at New York's LaGuardia Arts High School and Minneapolis' Guthrie Theater. Proud Vice President of Actors' Equity Association and Core Member of #FairWageOnStage. More at SidSolomon.com.

MICHAEL THATCHER (*Fight Captain*, *Understudy*). Broadway: TPTGW. Off-Broadway: *Julius Caesar* (NYSE), *The Time Machine* (NYMF); National tours: *Guys and Dolls*, *A Christmas Story*. Regional: Utah, Texas, Virginia Shakespeare Festivals. TV: "Quantic." M.F.A., U of Houston PATP. IG: @thatched44.

HENRY LEWIS (*Co-Author*) is an Olivier Award-winning writer, actor and is the artistic director of Mischief Theatre. Henry trained at LAMDA. His recent credits include writer and actor for *The Play That Goes Wrong* (Broadway, West End and U.K./international tour—winner of Best New Comedy at the Olivier Awards 2015 and What's On Stage Awards 2014), *Peter Pan Goes Wrong* (BBC1, West End/U.K. tour/Pleasance London—nominated for Best New Comedy at the Olivier Awards 2016), *The Comedy About a Bank Robbery* (West End—nominated for Best New Comedy at the Olivier Awards 2017), *Christmas Carol Goes Wrong* (BBC1), *Royal Variety Performance* (ITV), *Keep It in the Family* (ITV), *Mischief Movie Night* (West End/ U.K. tour—nominated for Best New Comedy at the Olivier Awards 2018), actor and producer for *Mercury Fur* (Trafalgar Studios—nominated for Best Production Off-West End Awards), actor for *Beasts & Beauties* (Hampstead Theatre) and producer of Tracy Letts' *Superior Donuts* (Southwark Playhouse—winner of Peter Brook Empty Space Award).

JONATHAN SAYER (*Co-Author*). Training: LAMDA. Jonathan is an Olivier award-winning writer and the company director of Mischief Theatre working as a writer, actor and producer. Theater includes *Mischief Movie Night* (Arts Theatre), *The Comedy About a Bank Robbery* (Criterion Theatre), *The Play That Goes Wrong* (Lyceum

Theatre, Broadway run Duchess Theatre, West End run, U.K. and international tour—writer/actor, Olivier Awards and Whats On Stage Awards Best New Comedy), *Peter Pan Goes Wrong* (U.K. tour and West End—writer/actor), *The Nativity Goes Wrong* (writer, Mischief Theatre and Reading Rep co-production), *Lights! Camera! Improvise!* (various venues, actor, improviser, producer, Spirit of the Fringe Award 2013 Best Improv Show Award 2012) and *Happy Birthday Simon* (Orange Tree, actor). Television includes “Peter Pan Goes Wrong” (BBC One, writer/actor/associate producer), “The Royal Variety Performance: The Play That Goes Wrong” (ITV, writer and actor), “Keep It in the Family” (writer, ITV), “A Christmas Carol Goes Wrong” (BBC One, writer/actor). Radio includes *The Christmas Show That Goes Wrong* (BBC radio two).

HENRY SHIELDS (*Co-Author*) trained at LAMDA. He is an award-winning writer and has been a member of Mischief Theatre since 2009. Theater includes *The Play That Goes Wrong* (writer/actor, winner 2015 Olivier Award and WhatsOnStage Award for Best New Comedy), *Peter Pan Goes Wrong* (writer/actor, 2016 Olivier Award nominee for Best New Comedy), *The Comedy About a Bank Robbery* (actor/writer, 2017 Olivier Award nominee Best New Comedy), *Mischief Movie Night* (actor, 2018 Olivier Award nominee for Best New Comedy), *The Nativity Goes Wrong* (writer), *The Comedy About a Bank Robbery* (writer/actor) and *The Busy Body* (Southwark Playhouse). Television includes: “The Royal Variety Performance 2016: The Play That Goes Wrong,” “Holby City” (BBC), “Keep It in the Family” (ITV), “Peter Pan Goes Wrong” (BBC) and “A Christmas Carol Goes Wrong” (BBC). Henry is currently working on, and developing, a number of new projects.

MATT DiCARLO (*Tour Director*) is overjoyed that things are going Wrong all over North America! As the Production Stage Manager, Matt helmed the Broadway production of *The Play That Goes Wrong* for the first year and a half of its run. He served as the Associate Director for the 2017–2018 national tour of the Tony Award winning revival of *The Color Purple*, which he also stage managed on Broadway. Other Broadway credits include *Honeymoon in Vegas* and *Rock of Ages*. Regional theater work includes world premieres at La Jolla Playhouse and American Conservatory Theatre, and 12 productions at Paper Mill Playhouse. Matt has his B.F.A. from Rutgers University and is on the faculty at SUNY Purchase. He has supervised dozens for events with Broadway Cares/Equity Fights AIDS, Target and David Stark Design. Matt is endlessly grateful to the producers of *The Play That Goes Wrong* and to Mischief Theatre, for giving us the outlet and opportunity to make people laugh. Love to Joey.

MARK BELL (*Original Broadway Director*). Trained at École Internationale de Théâtre, Jacques Lecoq and was co-Artistic Director of Liquid Theatre. Liquid shows include *If You Were Mine* (ACW), *Feeding Time* (BAC), *Endgame* (BAC) and *Crave* (BAC and touring). Directing includes *Che Disastro di Commedia* (Theatro Greco, Rome); *Waiting for Waiting for Godot* (St James Theatre, Off-West End); *The Comedy About a Bank Robbery* (West

End); *Ma Este Megbukunk* (Central Színház, Budapest); *The Play That Goes Wrong* (West End); *Blue Blood by Anna Jordan* (Riverside); *The Revenger's Tragedy* (RCSSD, London); *A Servant of Two Masters*, *Scapino* (CMU, Pittsburgh); *The Snowfall* (Etcetera). Mark has taught and directed at LAMDA, Royal Central School of Speech and Drama, UEA and East 15 acting schools. markbell.info.

NIGEL HOOK (*Scenic Design*) has designed an enormous range of drama, musical and opera productions throughout the U.K., Europe and the Brits Off-Broadway (*Unsuspecting Susan*) season in New York. West End credits: *Spread a Little Happiness* (Whitehall); *Philadelphia, Here I Come!* (Wyndhams); *Elegies for Angels* *Punks and Raging Queens* (Criterion); *Ferry Across the Mersey* (Lyric); *The Boys in the Band* (Aldwych); *Party and When Pigs Fly* (Arts); *Forbidden Broadway* (Albery); *Pageant* (Vaudeville); *Step toe and Son* (Pinter); and the 2015 Olivier Award winner for Best New Comedy, *The Play That Goes Wrong* (Duchess...still going wrong!). Future productions include the musical *A Gentleman's Guide to Love & Murder* at Oscarsteatr, Stockholm 2018.

ROBERTO SURACE (*Costume Design*) originates from Melbourne, Australia, where he trained at the Victorian College of the Arts (VCA), now based in London. *The Play That Goes Wrong* marks his Broadway debut. West End: *The Comedy About a Bank Robbery* (Criterion), *Peter Pan Goes Wrong* (Apollo) and *The Play That Goes Wrong* (Duchess). U.K. national tours: *The Play That Goes Wrong*, Agatha Christie's *And Then There Were None* and *Peter Pan Goes Wrong*. Off-West End: *The Trial of Jane Fonda* (Park). International: *The Play That Goes Wrong* (Budapest, Rome and Australian tour). TV: “Peter Pan Goes Wrong” (BBC One).

RIC MOUNTJOY (*Lighting Design*). Selected designs include *The Play That Goes Wrong* (Duchess Theatre, West End, also touring Australia and the U.K. in 2017); *Mr. Popper's Penguins* (New Victory Theater New York City, Criterion Theatre, West End and U.K. tour), the world premiere of *Karagula* by Philip Ridley (Soho Theatre London, site-specific), *Dinner at the Twits* (adapted from Roald Dahl for his centenary), *What the Ladybird Heard* (international tour: U.K., Singapore, Hong Kong and Middle East), *Pandemic* (Singapore International Festival) and *The White Whale* (an outdoor adaptation of Moby Dick, Leeds). Relights include *The Magic Flute* (London Coliseum, English National Opera). ricmountjoy.com.

ANDREW JOHNSON (*Sound Design*). *The Bubbly Black Girl Sheds Her Chameleon Skin* (European premiere), *Death Takes a Holiday* (U.K. premiere), *Ragtime*, *Titanic*, *TPTGW* (West End, Australia and U.K. tours), *Dogfight* (European premiere), *Catch Me If You Can* (European premiere), *Girlfriends*, *The Stripper*, *The Toxic Avenger*, U.K. Off-West End nominations for Best Sound Design for *Mack and Mabel*, *Titanic* and *Grand Hotel* (Southwark Playhouse). Andrew is currently a regular sound designer for Charing Cross Theatre and Theatre Royal Stratford East, London. 2017 shows: *The Braille Legacy*, *Tommy* U.K. tour and *How to Succeed in Business Without Really Trying*.

STEPHEN KOPEL, CSA (*U.S. Casting*). Broadway: *Amélie*, *Sunday in the Park...*, *She Loves Me*, *Noises Off*, *On the Twentieth Century*, *Violet*, *Beautiful: The Carole King Musical*, *The Winslow Boy*, *The Glass Menagerie*, *The Mystery of Edwin Drood*, *Harvey*, *Once*, *Anything Goes*, *Brief Encounter*, *The Scottsboro Boys*, *Sondheim on Sondheim*, *Hedda Gabler*. Off-Broadway: *Kingdom Come*, *The Robber Bridegroom*, *Invisible Thread*, *Indian Ink*, *The Common Pursuit*. Kopel currently serves as casting director for Roundabout Theatre Company and Encores! Off-Center.

ALLIED TOURING (*Tour Marketing & Press*) is a full-service engagement management agency representing Broadway tours and other live touring events across North America. Current tours: *Bat Out of Hell*; *The Book of Mormon*; *Ronald Dahl's Charlie and the Chocolate Factory*; *Rodgers & Hammerstein's Cinderella*; *Elf The Musical*; *Hello, Dolly!*; *Kinky Boots*; *The Play that Goes Wrong*; *Rent*; *School of Rock*; *Something Rotten!*; and *Irving Berlin's White Christmas*. Upcoming tours: *Bandstand*, *The Lightning Thief*, *Mean Girls*, *Rock of Ages* and *SpongeBob SquarePants*.

THE BOOKING GROUP (*Tour Booking*). Since its inception in 1996, The Booking Group has represented 25 Tony Award-winning Best Musicals and Plays. Current touring productions include *Hamilton*; *Anastasia*; *Come from Away*; *Dear Evan Hansen*; *Hello, Dolly!* starring Betty Buckley; *The Book of Mormon*; *School of Rock*; *Waitress*; *On Your Feet!*; *Rent* 20th anniversary tour; *Fiddler on the Roof*; *The Color Purple*; and *Irving Berlin's White Christmas*. Future productions include: *The Cher Show*, *Mean Girls*, *My Fair Lady*, *Pretty Woman* and *To Kill a Mockingbird*.

JEFF NORMAN (*Production Stage Manager*). Tours: *Something Rotten!*, *Newsies*, *Chicago*. Las Vegas: *Mamma Mia!*, *The Lion King*, *Cirque du Soleil's O*. Toronto: *Beauty and the Beast*, *Miss Saigon*, *Les Misérables*. Opening team for Disney Cruise Line. Proud member of Actors' Equity Association.

MATT SCHREIBER (*Stage Manager*). Broadway: *Motown*, *The Performers*, *Godspell*, *In the Heights*, *Avenue Q*. National tours: *Something Rotten!*, *Motown: The Musical*, *Wicked*, *Memphis*, *In the Heights* and *Mamma Mia!* Love to Mackenzie.

JOSE SOLIVAN (*Company Manager*). Broadway tours managed: *The Color Purple*, *Finding Neverland*, *Cabaret*, *R&H Cinderella*, *The Gershwins' Porgy and Bess*, *Anything Goes*, *Hairspray*, *The Drowsy Chaperone*, *Rent*, *The Producers*, *Grease* and *Spamalot*. Broadway tours performed: *Oklahoma!* "Turn your wounds into wisdom."—Oprah. Instagram: cmjosesolivan.

DIGBY ROBINSON (*U.K. Production Management*) has over 30 years' experience of production management in both the commercial and subsidized sectors. Recent productions in London's West End include *Peter Pan Goes Wrong* (Apollo), *The Play That Goes Wrong* (Duchess), *The Comedy About a Bank Robbery* (Criterion) and *Matilda* for the Royal Shakespeare Company (Cambridge). Current

projects include *Death of a Salesman* (U.K. tour) and *Fat Friends The Musical* (U.K. tour).

BESPOKE THEATRICALS (*General Management*). Partners Amy Jacobs and Devin Keudell manage Broadway musicals, plays and tours. Current/recent productions: *Tootsie*, *Harry Potter and the Cursed Child Parts One and Two*, *School of Rock*, *The Play That Goes Wrong*, *The Boys in the Band* and *Angels in America*. Upcoming: *Beetlejuice* and *The Ferryman*. General Managers include David Roth, Danielle Saks and Seth Shepsle.

KEVIN MCCOLLUM (*Producer*) has received the Tony Award for Best Musical for *In the Heights* (2008), *Avenue Q* (2004), and *Rent* (1996), which also won the Pulitzer Prize. He is currently represented on Broadway with the Olivier Award-winning *The Play That Goes Wrong*. He produced *Something Rotten!* (Broadway, National Tour), *Hand to God* (Broadway, West End), *Motown: The Musical* (Broadway, West End, and National Tour), *The Drowsy Chaperone* in 2006, which won five Tony Awards, Baz Luhrmann's production of Puccini's *La Bohème* in 2002, [*title of show*] in 2008, the touring and Broadway productions of *Irving Berlin's White Christmas*, the off Broadway hit *De La Guarda*, the recent hit revival of *West Side Story*, and *Bengal Tiger at the Baghdad Zoo*. In 1995 Mr. McCollum co-founded the Producing Office, and has since created Alchemation, a theatrical and media producing company committed to new work. Mr. McCollum was trained at the University of Cincinnati College-Conservatory of Music, and earned his Master's degree in film producing from the Peter Stark Program at the University of Southern California. In 1995, he received the Robert Whitehead Award for Outstanding Commercial Theatre Producing.

J.J. ABRAMS (*Producer*) has no idea what he's doing here. A fan of theater since he was a child, he claims to be thrilled to make his first foray onto Broadway with *The Play That Goes Wrong*. Abrams, founder of Bad Robot Productions, is a writer, director and/or producer of such television series as "Felicity," "Alias," "Lost," "Fringe," "Person of Interest" and "Westworld" and such films as *Mission Impossible: III*, *Star Trek*, *Mission: Impossible—Ghost Protocol*, *Super 8*, *Star Trek Into Darkness*, *Mission Impossible—Rogue Nation*, *10 Cloverfield Lane* and *Star Trek Beyond*. In 2013, Abrams collaborated with Doug Dorst on the novel *S*, which became a New York Times Best Seller. Abrams most recently directed and produced *Star Wars: The Force Awakens*, which he also co-wrote with Lawrence Kasdan. He and his wife, Katie McGrath, live in Los Angeles with their three children.

KENNY WAX (*Producer*) is a triple Olivier Award-winning London-based producer, currently serving a three-year term as the President of the Society of London Theatre. His musical *Top Hat* won three Olivier Awards including Best New Musical from its seven nominations. His production of *Once on This Island* won Best New Musical in 1995 from its four nominations and *The Play That Goes Wrong* won Best New Comedy at the Olivier Awards in 2015 and is still playing in the West End, on a

UK tour and has just been extended on Broadway, where it won a Tony Award for best set design. *Peter Pan Goes Wrong* was nominated for an Olivier in 2016 and *The Comedy About a Bank Robbery* is now into its third year at the Criterion Theatre in London. Kenny has just opened a new musical, *Six*, about Henry VIII's wives, transferring from the Edinburgh Festival into the West End. Later this year he will present the first staged production of *The Worst Witch*, based on the books by Jill Murphy. In the U.S. in 2018/19 Kenny will present *Peter Pan Goes Wrong*, *Around the World in 80 Days* and *Mr Popper's Penguins*.

STAGE PRESENCE LTD. (Producer) is delighted to be part of the team presenting Mischief Comedy shows on Broadway and all across the United States

CATHERINE SCHREIBER (Producer) is a two-time Tony-winning, international producer; Broadway Global Producer of the Year, 2017. Productions: Broadway: Lead Producer: *The Play That Goes Wrong*, Producer: *Pretty Woman*. Upcoming: *Network*, Broadway. London: *Dreamgirls*. Upcoming: Lead Producer: Company directed by Marianne Elliott. Recent (U.K.) Lead Producer: *The Lion, the Witch and the Wardrobe*; *Heisenberg*; *The Life*; *Gabriel*. Catherine is most proud of bringing *The Scottsboro Boys* to London. Winner: London Critics' Circle Award, Evening Standard Award. Nominated for seven Olivier Awards including Best Musical. Tony winner for *Clybourne Park* and *Angels in America*. Six Tony nominations include *Fiddler on the Roof*, *The Scottsboro Boys*, *Next Fall*, *Peter and the Starcatcher*. Four Olivier nominations: *Dreamgirls*, *Show Boat*, *The Scottsboro Boys*, *People Places and Things*. Past productions: *The King's Speech* (West End); *Stick Fly* (Broadway); *Desperate Writers* (Off-Broadway).

KEN DAVENPORT (Co-Producer). *Once on this Island* (Tony Award), *Gettin' the Band Back Together*, *Groundhog Day*, *Spring Awakening* (Tony nomination), *It's Only a Play*, *Macbeth*, *Godspell*, *Altar Boyz*, *The Awesome '80s Prom*, *Daddy Long Legs* and more. Executive Producer for North America of Andrew Lloyd Webber's Really Useful Group. Created "Be a Broadway Star" board game (available on Amazon), DidHeLikeIt.com and author of the blog TheProducersPerspective.com.

LUCAS McMAHON (Producer) is thrilled to help spread Mischief's brand of mayhem across America! He was worked with Kevin McCollum at Alchemation since 2012. Other credits include *The Play That Goes Wrong* on Broadway, *Something Rotten!* (Broadway and national tour) and *Hand to God* (Broadway and West End). He is a proud alumnus of Northwestern University. He would like to thank his family and friends for letting him believe he is right when is often so wrong.

MARTIAN ENTERTAINMENT (Co-Producer) is Gregory Rae, Carl D. White and Tyrus Emory. Credits: *The Normal Heart* (Tony Award), *Hedwig and the Angry Inch* (Tony Award) and many others. Upcoming: *The Lightning Thief: The Percy Jackson Musical*, *Loch Ness*, *Home Street Home*. MartianEntertainment.com.

JACK LANE (Co-Producer). Broadway: *Peter and the Starcatcher* (Tony nomination), *Fun Home* (Tony Award), *The Humans* (Tony Award), *The Play That Goes Wrong* and *The Prom*. Off-Broadway: *Shear Madness*. Jack is the Executive Producer and co-founder of Stages St. Louis, a 32-year-old regional theater.

DOUBLE GEMINI PRODUCTIONS (Co-Producer). Wendy Federman and Carl Moellenberg have collectively garnered 18 Oscars (that is what they call them, right?). Career highlights: Wendy doing the 100-yard dash in a long red dress at Radio City on national TV, Carl searching in Thailand for the missing star who ate too much sushi.

deROY-BRUNISH (Co-Producer). Jamie deRoy: three Tony Awards, three Drama Desk, six Outer Critics, two Drama League awards; 41 Broadway and 33 Off-Broadway shows. TV: 11 Telly Awards. Film: Broadway: *The Golden Age Trilogy*. Corey Brunish has garnered eight Tony nominations, two Tony Awards. Currently: *Come from Away*. *Beautiful* is now in its fourth year. For Jessica.

DAMIAN ARNOLD (Co-Producer) trained at LAMDA for three years. Producing credits: *Don't Dress for Dinner* (Chicago and Broadway, two Tony nominations), *Gypsy* with Imelda Staunton (West End, Olivier Award), *Thark* by Ben Travers, *Brief Encounter* (dir. Emma Rice). Investor: *Matilda* (Broadway), *Blithe Spirit* with Angela Lansbury (West End and U.S. tour), *Labour of Love* (with Martin Freeman), *The Lieutenant of Inishmore* (West End), *The Moderate Soprano* by David Hare, *The Girl from the North Country* (West End).

GREENLEAF PRODUCTIONS (Producer) is a Tony, Drama Desk, and Olivier Award-winning company whose recent productions include: *Dreamgirls* West End, *Groundhog Day*, *Matilda the Musical*, *Fiddler on the Roof* and *Menopause the Musical*, both currently on tour throughout the United States. They are very proud to be a part of the Wrong family. For more information visit greenleafproductions.com.

BARD-ROTH (Co-Producer). Bard Theatricals (Annette Jolles, Jim van Bergen, Laurence Holzman, Lara Holzman, David Stern, Linda Hamil): Broadway: *Jagged Little Pill* (upcoming), *The Play That Goes Wrong*, *Fiddler...* 2015 (and tour), *China Doll*, *The Scottsboro Boys* (and London), *The Anarchist*, *Looped*. Dean Roth: *Puffs*, *Be More Chill*, *Jagged Little Pill*, *Macbeth* (Alan Cumming), *Clinton The Musical* and 27 other productions on- and Off-Broadway and in the U.K.

JOHN YONOVER (Co-Producer). Supported and invested in more than 35 productions on Broadway, in Chicago and London, including *Memphis*, *Dee Snider's Rock and Roll Christmas* (Toronto and Chicago), *First Date* and the currently running *Dear Evan Hansen* and *Come from Away*.

STAFF FOR *THE PLAY THAT GOES WRONG***GENERAL MANAGEMENT
BESPOKE THEATRICALS**

Amy Jacobs Devin Keudell
David Roth Danielle Saks Seth Shepsle

COMPANY MANAGER

Jose Solivan

Assistant Company Manager Jessica Troy

PRODUCTION MANAGEMENT

David Benken Rose Palombo

U.K. PRODUCTION MANAGEMENT

Digby Robinson

TOUR MARKETING & PRESS**ALLIED TOURING**

Marya K. Peters Andrew Damer
Sarah Dahlberg Jennifer Gallagher
Meghan Kastenholz Anne Dailey Meyer
Scott Praefke Jacqueline Smith
Anne Waisanen Shae Woodward

TOUR BOOKING AGENCY**THE BOOKING GROUP**

Meredith Blair, Kara Gebhart
thebookinggroup.com

U.S. CASTING

Stephen Kopel, CSA

LEGAL COUNSEL**LEVINE PLOTKIN & MENIN, LLP**

Loren Plotkin, Conrad Rippey, Susan Mindell
Daniel Watkins, Emily Erstling

Production Stage Manager Jeff Norman
Stage Manager Matt Schreiber
Associate Director Greg Tannahill
Fight Captain Michael Thatcher
Associate Costume Designer Lisa Zinni
Assistant Costume Designer Amanda Jenks
Associate Lighting Designer Jeremy Cunningham
Assistant Lighting Designer Wilburn Bonnell
Associate Sound Designer Beth Lake
Assistant Sound Designer Stephen Dee
U.K. Technical Design Consultant Alan Bartlett
U.K. Production Consultant Sacha Brooks
Production Carpenter Jeff Zink
Head Carpenter Martin Blacker
Assistant Carpenter Leon Lobsinger
Production Sound Supervisor Dillon Cody
Head Sound Christopher Mark Walters
Production Props Emiliano Pares
Head Props Wendy Joy Beckwith
U.K. Props Buyer Jasper Fox
Production Electricians Brendan Quigley
Head Electrician Dirk Van Pernis

Moving Light Programmer Chelsea Zalikowski
Wardrobe & Hair Supervisor Emily Rose Magnuson
Hair & Wig Stylist Kim Shriver
Vocal Coach Kate Wilson
Assistant to Director Susanna McCollum
Production Management Asst. Ron Gerschel
Production Assistant Whitney Keeter
U.S. Production Photography Jeremy Daniel
U.K. Production Photography Simon Turtle
Bespoke Assistant

General Managers Mattea Cogliano-Benedict,
Michael Demniak, Lisa Jaeger

General Management Associate Jim Brady,
Claire Trempe

GM Office Manager Shira Wolf

GM Interns Rebecca Ferrer, Jenna Rich

U.S. Advertising & Marketing SPOTCO

Marketing Services bdb marketing/Betsy Bernstein

U.K. Marketing JHI Marketing

U.K. Press Jo Allan PR

U.K. Tour Press & Marketing Helen Snell

Ltd Accountant WithumSmith+Brown PC/

Robert Fried, CPA, Karen Kowgios, CPA,

Anthony Moore, CPA

U.K. Accountants Michael Collins,

Lois Hargreaves

Controller Galbraith & Co./LeeAnn Kelley

Banking Signature Bank/Margaret Monigan

Insurance AON/Albert G. Ruben/Claudia Kaufman

Legal Counsel for

Goes Rights Ltd Brooks and Distler/

Marsha Brooks

Physical Therapy NEURO TOUR,

Physical Therapy Inc.

Payroll Services Checks and Balances/

Anthony Walker

Visa Consultants Wiskoff Law, PLLC/

David King

Travel Agent Tzell Travel/

The "A" Team, Andi Henig

Housing Services ABA IDEAL/Elizabeth Helke

Merchandising Creative Goods/

Pete Milano

Creative Services Allied Integrated Marketing/Debbie

Allamong, Eric Stormoen

ALCHEMATION

Kevin McCollum

Lucas McMahon

Darnetha M'Baye

Jack Eidson Jessica Troy

KENNY WAX LTD.

Kenny Wax

Kezia Lock

Sarah Ryan Oriel Bathurst

Amanda Sutton

BroadwayGoesWrong.com

Facebook, Twitter and Instagram:
@BwayGoesWrong

CREDITS

Scenery & automation built by Bay Scenery Ltd. Chandelier by Gothic Gates Ltd. Trick props by PMB Theatre Services Ltd, Russell Beck Studios Ltd, Breakaway Effect Ltd, Karl Evans & Terry Tiffin. Drapes by Chris Claydon Ltd. Upholstery by Claire Sanderson. Portrait artwork by Jane Gibson. Lighting & sound equipment from PRG. Bra*Tenders for hosiery and undergarments. Makeup provided by M-A-C.

SPECIAL THANKS

Nica Burns, Laurence Miller and all at Nimax Theatres. Rachel Williams and the stage management team at the Duchess Theatre, London. Strike Digital, N9 Design, Dragonfly Design, Cambridge Arts Theatre, The Umbrella Rooms, Jonathan Waller, Judith Phillips, Bryony Myers, Charlie Longstaff, Thomas Platt, Martin Thomas, Adam Meggido, Harriet Parsonage, Jenny Wilson, Carla Batten, Mike Hagan, Niall Ransome, Mike Bodie, Harry Kershaw, Joshua Elliott, Julie Jordan, Dylan Emery, Raz Shaw, Janet & David Burke, Suzie Zamit, Lucy Danser, Caroline Jenkins, Julia Worms, Dawn Farrow, Jonathan Maydew, Rodney Cottier, The Old Red Lion, Questors Theatre & LAMDA, Hailey Ferber, Darren DeVerna, Manny and Lani Azenberg, Anton Media Group, Chubb Group

MUSIC CREDITS

“Girls on Film” Written by Simon Le Bon, Nick Rhodes, Andy Taylor, Roger Taylor and John Taylor and performed by Duran Duran. Published by Gloucester Place Music Ltd and used by permission of Sony/ATV Music Publishing LLC. All Rights Reserved. Appears courtesy of Warner Music Group. “Rio” Written by Simon Le Bon, Nick Rhodes, Andy Taylor, Roger Taylor and John Taylor and performed by Duran Duran. Published by Gloucester Place Music Ltd and used by permission of Sony/ATV Music Publishing LLC. All Rights Reserved. Appears courtesy of Warner Music Group.

Production travel & housing by
ROAD REBEL ENTERTAINMENT TOURING,
San Diego, CA

Technical Rehearsals and Previews held at the
LEXINGTON OPERA HOUSE in Lexington, K.Y.



The actors and stage managers employed in this production are members of Actors' Equity Association, the union of professional actors and stage managers in the United States.



The Director is a member of the Stage Directors and Choreographers Society, a national theatrical labor union.



Backstage and Front of the House Employees are represented by the International Alliance of Theatrical Stage Employees (or I.A.T.S.E.).



United Scenic Artists represents the designers and scenic painters for the American Theatre.



The Press Agents and Company Managers employed in this production are represented by the Association of Theatrical Press Agents & Managers.