



◆ THE ◆  
**BAND'S  
VISIT**

A NEW MUSICAL



**BROADWAY** 2019  
2020

ORIN WOLF STYLESFOUR PRODUCTIONS EVAMERE ENTERTAINMENT  
ATLANTIC THEATER COMPANY

DAVID F. SCHWARTZ BARBARA BROCCOLI FREDERICK ZOLLO  
GROVE•REG LASSEN BLUME THOMAS STEVEN PERAKOS MARC PLATT

THE SHUBERT ORGANIZATION THE BARUCH/ROUTH/FRANKEL/VIETTEL GROUP ROBERT COLE DEROY-CARR-KLAUSNER  
FEDERMAN-MOELLENBERG FILMNATION ENTERTAINMENT ROY FURMAN FVSL THEATRICALS HENDEL-KARMAZIN  
HORIPRO INC. IPN JAM THEATRICALS THE JOHN GORE ORGANIZATION DAVID MIRVISH JAMES L. NEDERLANDER  
AL NOCCIOLINO ONCE UPON A TIME PRODUCTIONS SUSAN ROSE PAUL SHIVERICK

present

• THE •  
**BAND'S VISIT**

A NEW MUSICAL

Music and Lyrics by  
**DAVID YAZBEK**

Book by  
**ITAMAR MOSES**

Based on the screenplay by ERAN KOLIRIN

with  
**CHILINA KENNEDY SASSON GABAY**

POMME KOCH JOE JOSEPH  
MIKE CEFALO ADAM GABAY RONNIE MALLEY DAVID STUDWELL  
JENNIFER APPLE DANNY BURGOS MARC GINSBURG KENDAL HARTSE  
SARA KAPNER LOREN LESTER JAMES RANA NICK SACKS  
OR SCHRAIBER HANNAH SHANKMAN BLIGH VOTH

Scenic Design  
**SCOTT PASK**

Costume Design  
**SARAH LAUX**

Lighting Design  
**TYLER MICOLEAU**

Sound Design  
**KAI HARADA**

Projection Design  
**MAYA CIARROCCHI**

Hair & Wig Design  
**CHARLES G. LaPOINTE**

Casting  
**TARA RUBIN CASTING  
PETER VAN DAM, CSA**

Dialect Coach  
**ZOHAR TIROSH-POLK  
RONNIE MALLEY**

Associate Directors  
**SETH SIKES & ZI ALIKHAN**

Associate Choreographer  
**JESSE KOVARSKY**

Orchestrations  
**JAMSHIED SHARIFI**

Music Coordinator  
**DEAN SHARENOW**

Additional Arrangements  
**ANDREA GRODY**

Music Director  
**RICK BERTONE**

Tour Booking  
**THE ROAD COMPANY**

Marketing & Publicity Direction  
**BOND THEATRICAL GROUP**

General Management  
**GENTRY & ASSOCIATES  
STEVE VARON**

Production Management  
**NETWORKS PRESENTATIONS  
WALKER WHITE**

Production Stage Manager  
**JOHN M. ATHERLAY**

Executive Producers  
**ALLAN WILLIAMS  
SETH WENIG**

Company Manager  
**CHRIS DANNER**

Music Supervisors  
**ANDREA GRODY & DEAN SHARENOW**

Choreography by  
**PATRICK McCOLLUM**

Directed by  
**DAVID CROMER**

World Premiere presented by Atlantic Theater Company, New York City, 2016.

Original Broadway Cast Recording on Ghostlight Records.

# CAST



CHILINA  
KENNEDY



SASSON  
GABAY



POMME  
KOCH



JOE  
JOSEPH



MIKE  
CEFALO



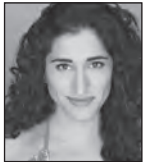
ADAM  
GABAY



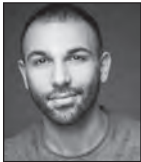
RONNIE  
MALLEY



DAVID  
STUDWELL



JENNIFER  
APPLE



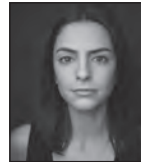
DANNY  
BURGOS



MARC  
GINSBURG



KENDAL  
HARTSE



SARA  
KAPNER



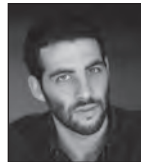
LOREN  
LESTER



JAMES  
RANA



NICK  
SACKS



OR  
SCHRAIBER



HANNAH  
SHANKMAN



BLIGH  
VOTH

Dina.....	CHILINA KENNEDY
Tewfiq.....	SASSON GABAY
Itzik.....	POMME KOCH
Haled.....	JOE JOSEPH
Telephone Guy.....	MIKE CEFALO
Papi.....	ADAM GABAY
Camal.....	RONNIE MALLEY
Avrum.....	DAVID STUDWELL
Anna.....	JENNIFER APPLE
Sammy.....	MARC GINSBURG
Iris.....	KENDAL HARTSE
Julia.....	SARA KAPNER
Simon.....	JAMES RANA
Zelger.....	OR SCHRAIBER
The Band.....	TONY BIRD, GEORGE CROTTY, EVAN FRANCIS, ROGER KASHOU, RONNIE MALLEY

Sasson Gabay and Adam Gabay are appearing with  
the support of Actors' Equity Association.

#### STANDBYS

Standbys never substitute for the listed performers unless  
a specific announcement is made at the time of the appearance.

DANNY BURGOS, LOREN LESTER, NICK SACKS,  
HANNAH SHANKMAN, BLIGH VOTH

Dance Captain: HANNAH SHANKMAN  
Assistant Dance Captain: DANNY BURGOS

#### THE BAND

Conductor/Keyboard—RICK BERTONE

Associate Conductor/Keyboard—ADRIAN RIES

Violin—TONY BIRD; Cello—GEORGE CROTTY; Clarinet/Saxophone/Flute—EVAN FRANCIS;  
Darbouka/Riq—ROGER KASHOU; Oud/Guitar—RONNIE MALLEY; Electric & Acoustic  
Bass—MARK VAN ZIEGLER; Drums/Arabic Percussion—SHAI WETZER; Musician Swing—  
ALEX FARHA.

Music Coordinator: Dean Sharenow

Music Preparation: Peter Foley

Electronic Music Design by Billy Jay Stein and Hiro Iida for Strange Cranium, Inc.

**SETTING:** Israel, 1996.

An airport bus station, the town of Bet Hatikva, the city of Petah Tikva.

THE BAND'S VISIT *WILL BE PERFORMED WITHOUT AN INTERMISSION.*

# MUSICAL NUMBERS

Overture.....	The Band
“Waiting”.....	The Residents of Bet Hatikva
“Welcome to Nowhere”.....	Dina, Itzik, Papi
“It Is What It Is”.....	Dina
“The Beat of Your Heart”.....	Avrum, Itzik, Simon, Camal
“Soraya”.....	The Band
“Omar Sharif”.....	Dina
“Haj-Butrus”.....	The Band
“Papi Hears the Ocean”.....	Papi
“Haled’s Song About Love”.....	Haled, Papi
“Something Different”.....	Tewfiq, Dina
“Itzik’s Lullaby”.....	Itzik, Camal
“Something Different” (reprise).....	Dina
“Answer Me”.....	Telephone Guy, Ensemble
The Concert.....	The Band



THE BAND'S VISIT Tour Cast. Photo by Matthew Murphy

**CHILINA KENNEDY** (*Dina*). Over 1,000 performances as Carole King in Broadway's *Beautiful Mary* in *Jesus Christ Superstar* (Broadway), Phoebe in *A Gentleman's Guide To Love And Murder* (Hartford/San Diego) and Sophie in the 1<sup>st</sup> U.S. National Tour of *Mamma Mia!* Artistic Producer of Toronto's Eclipse Theatre Company. [www.chilinakennedy.com](http://www.chilinakennedy.com)

**SASSON GABAY** (*Tewfiq*). An Israeli actor coming full circle portraying Tewfiq on stage after starring in the film version of *The Band's Visit*, which won him many awards, including the Best European Actor Award. He has been involved in theatre, film and television for more than 40 years. Member of the Beit Lessin Theatre in Tel Aviv for 20 years. In memory of our friend Ronit Elkabetz.

**POMME KOCH** (*Itz'ik*). Broadway: *The Band's Visit*. Off-Broadway: The Public Theater, Lincoln Center Educational. Regional: La Jolla Playhouse, A.C.T. San Francisco, O'Neill Theater Center, Theatre Calgary, Marin Theatre Company, Theater J, Shakespeare Theatre Company D.C., Folger Theater, Baltimore Symphony Orchestra, Round House Theatre, Studio Theatre, San Francisco Playhouse. TV: "Blue Bloods," "House of Cards." BFA The University of Michigan. Pomme is thrilled to be on tour with Bligh Voth and their dog, Karen, who is not thrilled. [www.pommekoch.com](http://www.pommekoch.com)

**JOE JOSEPH** (*Haled*). Broadway: *The Band's Visit*. Off-Broadway: *Merrily We Roll Along*, *Loveless Texas*, *Baghdaddy*, *Genet Porno*. Ads for Disaronno, Newport. Proud graduate of the University of Detroit Jesuit and the University of Michigan. For Andrea, ummi, I sing for you. @gojojoseph

**MIKE CEFALO** (*Telephone Guy*). National Tour debut! Honored to be bringing this incredibly special show across the country. Select Regional: *Newsies* (Engeman Theatre), *Next To Normal* (Wagon Wheel), *Singin' in the Rain* (Park Playhouse), *Bring It On* (Beck Center), *The Addams Family* (Forestburgh Playhouse), and *Pump Boys and Dinettes* (The American Theatre). Proud graduate of Baldwin Wallace University. Eternal gratitude to Mom, Dad, Tia, Danny, and the entire Cefalo/DiStazio extravaganza. @mikecef

**ADAM GABAY** (*Papi*). National Tour Debut! TV: "Our Boys" (HBO/Avishai), "She's Got It," "Polishuk," "Viki and I." Film: *Longing* (Adam), *Hunting Elephants*. Studied theatre at Arison Campus of the Arts and Alef High School of the Arts in Tel Aviv. To my supportive brother, Uri. @Adammgabay

**RONNIE MALLEY** (*Camal*). Multi-instrumentalist musician, actor, playwright, producer, and educator. Recent credits: *Macbeth* (Chicago Shakespeare), *Great Expectations* (Silk Road Rising/Remy Bumppo), *The Who and The What* (Victory Gardens), *The Jungle Book* (Goodman), *The White Snake* (OSF), *The Arabian Nights* (Regional Tour). Original Plays: *American Griot* and *Ziryab*, *The Songbird of Andalusia*. [www.ronniemalley.com](http://www.ronniemalley.com)

**DAVID STUDWELL** (*Avrum*). Off- Broadway: *Encores! Applause!*. Select Regional: Chicago Shakespeare; *Mary Stuart* (Burleigh), Ensemble Theatre Company; *Sweeney Todd* (Sweeney), PCPA Theatrefest; *Man of La Mancha* (Quixote), Portland Center Stage; *Fiddler on the Roof* (Tevye). Fulbright Specialist to Pakistan—2015. MFA, Purdue; BFA, SUNY Fredonia. Love to Kathleen, Nat, Nate, and all my well loved relations. [www.davidstudwell.com](http://www.davidstudwell.com)

**JENNIFER APPLE** (*Anna*). Thrilled to share this near & dear story! Select Regional: Chautauqua Theater Company, ACT, Goodspeed, Pennsylvania Shakespeare Festival. TV: "New Amsterdam." MFA: The American Conservatory Theater. Grateful for this incredible team & Peter/Tara Rubin. The most love to Mom, Dad, 3 Wacko Apples, & Geoff. [@JenniferApple\\_](http://JenniferApple.net)

**DANNY BURGOS** (*Standby*) is excited to be joining this beautiful production. Previous credits: Broadway/1<sup>st</sup> National: *On Your Feet!* (Emilio Standby). Regional: *Bhangin' It* (La Jolla), *In The Heights* (ZACH, Lyric OKC, Fulton). For my family y pa Hialeah! Gratitude to the entire creative team, HCKR and to Mr. Q! [www.dannyburgos.com](http://www.dannyburgos.com)

**MARC GINSBURG** (*Sammy*) is honored to be a part of this important piece of theatre! Credits include: *Ragtime* (Tateh), *Shrek* (Farquaad), *Beauty and the Beast* (Lumiere), *First Date* (Aaron), *Evita* (Che), *Spamalot* (Lancelot), *The Producers* (Leo Bloom), and First National Tour of Cameron Mackintosh's *Oliver!* (Fagin). Love to Liza, Phoenix, and Egon! [www.marccandliza.com](http://www.marccandliza.com) FB: [marccandliza](https://www.facebook.com/marccandliza) IG: @marc\_ginsburg TW: @m\_ginsburg

**KENDAL HARTSE** (*Iris*). Broadway/National Tour: *Summer, Cinderella, On a Clear Day...*, *Cabaret*. Select Regional/NYC: *Once* (Reza), *Hedwig...* (Yitzhak), *Pericles* (Thaisa). BFA Boston Conservatory, student of Michael Howard. Many thanks to Peter Van Dam and Tara Rubin, love to Austin, for Grammie. @kendalhartse

**SARA KAPNER** (*Julia*). Broadway: *Hollywood Arms*. Off-Broadway: *bare*. Favorite Regional: Recent revival of *Rags* (Goodspeed), *The Who's Tommy* (Denver Center), *The Addams Family* (MUNY-Critics Circle Award) & *Into the Woods* (MUNY). Film: *The Murder Pact* and *Twisted Sisters* (Lifetime), *A Little Help*. For RJ and Pita. @sarakapner

**LOREN LESTER** (*Standby*). National Tour debut. TV: 200+ episodes including "Curb Your Enthusiasm," "Hung" (recurring) and Robin/Nighting on "Batman: The Animated Series." Film (favorites): Wes Craven's *Red Eye*, *Rock 'n' Roll High School*. Regional: Pasadena Playhouse, NCRT, LA Philharmonic. [www.lorenlester.com](http://www.lorenlester.com)

**JAMES RANA** (*Simon*). Broadway: *The Band's Visit* (OBC). Off-Broadway: *The Government Inspector*, *Serendib*, *Shogun Macbeth*, *Mother Courage*, *Macbeth*, *Tartuffe*. International: *Love's Labour's Lost* (Royal Shakespeare Company), *Macbeth* (Bonn Biennale). Regional: Shakespeare Theatre Co., Luna Stage, East Lynne Theater. Film/Television: "Madam Secretary," "Chicago Fire," "Law & Order: SVU," *A Girl Like You with a Boy Like Me*. MFA-Trinity Rep Conservatory.

**NICK SACKS** (*Standby*). Stoked to be on tour! Broadway: *Dear Evan Hansen*. Select Regional: *A Walk on the Moon* (A.C.T), *Next To Normal* (TheaterWorks Hartford). Developmental: *Saved by the Bell*, *Irena*, *The Bad Years*. TV/film: Amazon's "Z: The Beginning of Everything." Training: The National Institute of Dramatic Arts, Carnegie Mellon School of Drama 16'. Many thanks to David Lillard at Industry Entertainment and to the most supportive family a guy could ask for, love you Mom and Dad. Go Jags. @nickkkks

**OR SCHRAIBER** (*Zelger*). In 2010 Or joined the Batsheva Dance Company. In parallel to his time in the company, he served at the IDF for three years. In 2018, he starred in and co-choreographed Boaz Yakin's film *AVIVA*. In 2019, he joined *The Band's Visit* National Tour.

**HANNAH SHANKMAN** (*Standby*). Broadway: *Wicked*, *Les Misérables*, *Side Show*, *Hair*. West End: *Hair*. Tours: *Rent*, *Les Misérables*. Regional: La Jolla Playhouse, The Kennedy Center, Williamstown Theatre Festival, Syracuse Stage, Casa Manana. TV/Film: *The Last Five Years*. For her family, Shane and Charlie. @hannahshank

**BLIGH VOTH** (*Standby*). Productions/Workshops include: Atlantic Theatre Company, Primary Stages, Kennedy Center, Ford's, Signature Theatre, Studio Theatre, Paper Mill Playhouse, Ogunquit, Lyric. Education: The Boston Conservatory. Love to Pomme. www.blighvoth.com

**DAVID YAZBEK** (*Music & Lyrics*). Broadway: *The Full Monty* (Tony nom., Drama Desk Award), *Dirty Rotten Scoundrels* (Tony nom.), *Women on the Verge of a Nervous Breakdown* (Tony nom.). TV/film: "Late Night With David Letterman" (Emmy Award), "Boardwalk Empire" (HBO), "Where In The World Is Carmen Sandiego?" theme. Five solo albums. Four Grammy Award noms. Tony, Grammy, Obie, Drama Desk and Lucille Lortel awards for *The Band's Visit*.

**ITAMAR MOSES** (*Book*). Plays: *Outrage*, *Bach at Leipzig*, *Celebrity Row*, *The Four of Us*, *Yellowjackets*, *Back Back Back*, *Completeness*, *The Whistleblower*, the evening of short plays *Love/Stories (or But You Will Get Used to It)*. Musicals: *Nobody Loves You* (with Gaby Alter) and *The Fortress of Solitude* (with Michael Friedman). Television: "Men of a Certain Age," "Boardwalk Empire," "Outsiders," "The Affair." NYU MFA in Dramatic Writing.

**ERAN KOLIRIN** (*Original Screenplay*). Born in 1973, his feature film debut, *The Band's Visit*, won him worldwide critical acclaim. His second feature film, *The Exchange*, premiered at the Official Competition at the Venice Film Festival and won the FIPRESCI prize at the San Francisco Film Festival. His third film, *Beyond the Mountains and Hills*, premiered at Cannes 2016 to critical acclaim worldwide.

**DAVID CROMER** (*Director*). New York: *The Band's Visit*, *The Treasurer*, *The Effect*, *Nikolai and The Others*, *Really Really*, *Tribes*, *The House of Blue Leaves*, *When the Rain Stops Falling*, *Brighton Beach Memoirs*, *Our Town*, *Adding Machine*, *Orson's Shadow*. Chicago: *Next to Normal*, *A Streetcar Named Desire*, *Picnic*, *The Price*, *The Hot 1 Baltimore*, *Sweet Bird of Youth*, *Come Back, Little Sheba*, *Angels in America*, *Cherrywood*, *The Cider House Rules*. 2018 Tony Award, 2010 MacArthur Foundation Fellow.

**PATRICK MCCOLLUM** (*Choreographer*). Credits include: *The Band's Visit* (Broadway, National Tour, Atlantic Theater Company); *Angels in America* (Broadway 2018); *The Tempest* (L.A. Philharmonic); *Oh, Hello!* (Broadway, Cherry Lane Theatre); *The Lightning Thief* (National Tour, Lucille Lortel Theater); *Man From Nebraska* (Second Stage); *Blueprint Specials* (Public Theater); *Rain* (Old Globe); *Unknown Soldier* (Williamstown Theatre Festival); *You Are Here* (Goodspeed Opera House); *Savage Love* (Public Theater); *Wilderness* (Abrons Arts Center); *Permission* (MCC). Upcoming projects include *Fall Springs* (Barrington); *Unknown Soldier* (Playwrights Horizons). As associate choreographer for Broadway/Off-Broadway: *The Last Ship*, *Peter and the Starcatcher*, *Rocky*, *Murder Ballad* (Manhattan Theater Club); *Wicked* as North American Dance Supervisor.

**ANDREA GRODY** (*Music Supervisor & Additional Arrangements*). Broadway: *The Band's Visit*, *Tootsie*. Off-B'way/Regional: *The Band's Visit* (Atlantic); *Assassins* (Yale Rep); Public Works' *As You Like It*; *The Fortress of Solitude*, *The Great Immensity*, *Love's Labour's Lost*, and *Venice* (Public Theater); *Robin Hood* as Composer/MD and *Unknown Soldier* (Williamstown). As writer/composer: *Strange Faces*. BA Princeton University, MA Royal Conservatoire of Scotland.

**DEAN SHARENOW** (*Music Supervisor & Music Coordinator*). Grammy-winning record producer/engineer. Broadway: *Tootsie*, *The Cher Show*, *The Band's Visit*, *Amélie*, *The Last Ship*, *Women on the Verge of a Nervous Breakdown*. Off-Broadway: *Girl From the North Country*, *Twelfth Night*, *The Total Bent*, *Fortress of Solitude* (all Public Theater). Album producer/engineer: *Tootsie*, *The Band's Visit*, *The Great Comet*, *Women on the Verge...*, *Bloody Bloody Andrew Jackson*, Shaina Taub, David Sanborn, Stephen Lynch, David Yazbek.

**SCOTT PASK** (*Scenic Design*) has designed over 50 Broadway productions, receiving three Tony Awards for his designs of *The Book of Mormon*, *The Coast of Utopia*, and *The Pillowman*. Additional credits include: *The Band's Visit* (Tony nom.), *Mean Girls* (Tony nom.) *Waitress*, *Something Rotten!*, *Oh Hello!*, *Pippin* (Tony nom.), *Nine*, *Pal Joey* (Tony nom.), *Les Liaisons Dangereuses* (Tony nom.), *HAIR*, *Finding Neverland*, *Urinetown*. Also, Cirque du Soleil's *Amaluna*, John Mulaney's Emmy Award winning *Kid Gorgeous* at Radio City for Netflix.

**SARAH LAUX** (*Costume Design*). Broadway: *The Band's Visit*, *Fully Committed*, *The Humans*. Selected Off-Broadway/Regional: *Superhero* (2nd Stage), *Downstairs* (Primary Stages), *Blue Ridge* (Atlantic), *This Ain't No Disco* (Atlantic), *Jerry Springer: The Opera* (New Group; Obie Award), *On The Shore* (Atlantic), *Bad Dates* (Huntington), *The End of Longing* (MCC), *Bad Jews* (George Street), *Man From Nebraska* (2nd Stage), *The Band's Visit* (Atlantic), *Ultimate Beauty Bible* (Pg 73), *The Effect* (Barrow Street), *The Humans* (Roundabout), *Thresh/Hold* (Pilobolus Dance Theater), *Come Back*, *Little Sheba* (Huntington), *Women or Nothing* (Atlantic), *Really, Really* (MCC). Feature Film: *Freakshow* (Maven). Television: "High Fidelity" (Hulu).

**TYLER MICOLEAU** (*Lighting Design*). Broadway: *Be More Chill*, *The Band's Visit* (2018 Tony award, American Theatre Wing Hewes Award). Recent Off-Broadway: *Dying City* (Second Stage Theater), *Socrates* (The Public Theater). Other notable Off-Broadway: *When the Rain Stops Falling* (Lucille Lortel Award), *Blasted* (ATW Hewes Award), *Bug* (Lucille Lortel and Obie Awards). 2010 Obie award for Sustained Excellence.

**KAI HARADA** (*Sound Design*). 2018 Tony Award, Best Sound Design of a Musical for *The Band's Visit*. Broadway: *Head Over Heels*, *Amélie*, *Sunday in the Park with George*, *Allegiance*, *Gigi*, *Fun Home*, *On the Town*, *First Date*, *Follies* (Tony and Drama Desk noms.) and *Million Dollar Quartet*. Other regional, international work.

**MAYA CIARROCCHI** (*Projections Design*). Broadway: *The Band's Visit* (Barrymore). Off-Broadway/regional: *The Band's Visit* (Atlantic), *The Effect* (Barrow Street), *As I Remember It* (Jacob's Pillow, Baryshnikov Art Center), *Sweet Bird of Youth* (Goodman), *Crowns* (Goodman, Jeff Award), *Ghost Light* (OSF), *All My Sons* (Huntington), *Throne of Blood* (OSF, BAM).

**CHARLES G. LAPOINTE** (*Hair Design*). Over 80 B'way shows including *Hamilton*, *Beautiful*, *Anastasia*, *SpongeBob SquarePants*, *Amélie*, *Motown*, *Allegiance*, *On Your Feet!*, *A Gentleman's Guide...*, *The Color Purple*, *Of Mice and Men*, *The Elephant Man*, *Newsies*, *Memphis*, *In the Heights*, *Jersey Boys*. TV: "The Wiz Live!" (Emmy nom.), "Blue Bloods," "American Crime," "Madoff," "Hairspray."

**JAMSHIED SHARIFI** (*Orchestrations*) has composed the scores for many studio and independent films; arranged music for Paula Cole, Ray Charles, Sting, Dream Theater and others; and produced recordings for several world music luminaries. He is thrilled to be a part of *The Band's Visit* family.

**RICK BERTONE** (*Music Director*) is thrilled to be with *The Band's Visit!* Broadway/First National Tour keyboard or conductor: *Wicked*, *If/Then*, *Porgy and Bess*, *Next To Normal*, *Spamalot*, *Avenue Q*, *Chicago*, *Mamma Mia*, Disney's *On The Record*. Off-B'way: *Avenue Q* (MD for 5 years), *Jerry Springer the Opera*. TV: "Rent Live." Select regional: *Jersey Boys* (Muny), *Evita* (St. Louis Rep). NYU grad.

**ZOHAR TIROSH-POLK** (*Israeli Dramaturg & Dialect Coach*). Translator and dialect coach of an upcoming Netflix show. Her plays: *The Zionists*, *Six and Homel Front* were presented at The New Group, Magic Theatre and Lincoln Center Theater (directors lab) among others.

**TARA RUBIN CASTING** (*Casting*). Selected Broadway: *Ain't Too Proud*, *King Kong*, *Summer: The Donna Summer Musical*, *The Band's Visit*, *Prince of Broadway*, *Indecent*, *Bandstand*, *Sunset Boulevard*, *Miss Saigon*, *Dear Evan Hansen*, *A Bronx Tale*, *Cats*, *Falsettos*, *Disaster!*, *School of Rock*, *Les Misérables*, *The Heiress*, *The Phantom of the Opera*, *Billy Elliot*, *Shrek*, *Spamalot*, ... *Spelling Bee*, *The Producers*, *Mamma Mia!*, *Jersey Boys*. Off-Broadway: *Gloria: A Life*, *Smoko Joe's Café*, *Jersey Boys*, *Here Lies Love*, *Love, Loss and What I Wore*. Selected Regional: Berkeley Repertory Theatre, Yale Repertory Theatre, La Jolla Playhouse, The Old Globe, Asolo Rep. www.tararubincasting.com

**FORESIGHT THEATRICAL** (*Management Consultant*) is comprised of partners Allan Williams, Aaron Lustbader, and Mark Shackel who oversee and supervise *The Phantom of the Opera*, *King Kong*, *The Prom* and *Sea Wall/A Life* on Broadway, and the worldwide management of *Kinky Boots* and *Charlie and the Chocolate Factory*.

**GENTRY & ASSOCIATES, INC.** (*General Management*) has been managing domestic and international touring productions for more than 20 years. Gentry & Associates has managed more than 70 touring productions internationally. Current and upcoming productions include Cameron Mackintosh's *The Phantom of the Opera*, *Les Misérables*, *A Bronx Tale*, *Blue Man Group*, *Falsettos*, *Fiddler on the Roof*, *Once On This Island*, Nickelodeon's *The SpongeBob Musical*, *Waitress*, Cameron Mackintosh's *Miss Saigon* and *The Band's Visit*.

**SETH SIKES** (*Associate Director*). Broadway/Off-Broadway associate credits include: *The Band's Visit*, *The Nance*, *Tribes*, and *Pageant*. As a cabaret singer, he performs solo acts regularly at Feinstein's/54 Below and other venues.



**ZI ALIKHAN** (*Associate Director*). A South Asian-American, culturally Muslim theatre director. Broadway/Tour: *Hamilton* (Resident Director), *Six Degrees of Separation* (Associate), *The Rose Tattoo* (Associate). Directing: Playmakers Rep, NYSAF, Juilliard, Yale. ALUM: NYU/Tisch. Faculty: Pace. Love to Mom and Baba. [www.zialikhan.com](http://www.zialikhan.com)

**JESSE KOVARSKY** (*Associate Choreography*). Broadway: *The Bands Visit*, *Fiddler on the Roof*. Off Broadway: *Sleep No More*, *Seeing You*, *Lost Mountain*, *The Death of Klinghoffer* at The Metropolitan Opera. Film/TV: *Anna Karenina*, *The Muppets Most Wanted*, "OITNB," Paul McCartney's music video "Who Cares."

**JOHN M. ATHERLAY** (*Production Stage Manager*). Broadway: *Fela!*, *Xanadu*, original company of *Beauty And The Beast*, *A Small Family Business*, *The Seagull* with Tyne Daly and Jon Voight and *Prelude To A Kiss*. National Tours: *Cabaret*, *Blihe Spirit* with Angela Lansbury, *Porgy And Bess*, *Anything Goes*, *Fela!*, *Young Frankenstein*, *Fiddler On The Roof* with Topol, *Little Shop of Horrors*, *The Producers*, and *Stardust* with Betty Buckley.

**NIKKI LINT** (*Stage Manager*). Broadway: *School of Rock* (Sub SM), *King Kong* (Sub SM). National Tours: *Mary Poppins* (PA), *Cabaret* (ASM). Select Regional PSM: *Billy Elliot*, *West Side Story* (Ogunquit Playhouse), *42nd Street*, *Memphis* (Gateway Playhouse); *9 to 5*, *Young Frankenstein*, *Saturday Night Fever* (OPH/GWP); *Les Misérables*, *The Wiz*, *Annie*, *Red* (Maltz Jupiter Theatre).

**SHELBY STARK** (*Assistant Stage Manager*). Touring: *Fiddler on the Roof*, *Dirty Dancing: The Classic Story Onstage*, and *Elf the Musical*, National; *Shrek the Musical*, International. BA, The University of Texas at Austin. Many thanks to Mason, Daddy, Shea, and caffeine for their constant support.

**CHRIS DANNER** (*Company Manager*). Touring: *Dear Evan Hansen*, Disney's *The Lion King*, *Kinky Boots*, Disney's *Newsies*, *Once*, *50 Shades*, *The Addams Family*, *9 to 5*, *Legally Blonde*, *The Color Purple*, *My Fair Lady*, *Blue Man Group*, *The Light in the Piazza*, *Annie*, *Oliver!*, *Cover Girls*, *Blue's Clues Live!*, and *the Magic of David Copperfield*.

**BOND THEATRICAL GROUP** (*Press & Marketing*). A fully independent booking, marketing and publicity company for live entertainment productions. Current tour marketing and booking projects include *Blue Man Group*, *CATS*, *Clueless*, *Cruel Intentions: The '90s Musical*, *Djembe*, *Girl from the North Country*, *First Date*, *Hundred Days*, *Jesus Christ Superstar*, *Latin History for Morons* and *Once on this Island*. Additional booking clients include *Spamilton* and *Tap Dogs*. Additional marketing and publicity projects include *Anastasia*, *The Band's Visit*, *Dear Evan Hansen*, *Diana* (Broadway), *Dr. Seuss' How the Grinch Stole Christmas!*

*The Musical*, *Escape to Margaritaville*, *Fiddler on the Roof*, *Moulin Rouge!*, *Oklahoma!*, *The Color Purple*, *The Phantom of the Opera* (Broadway), and *The Prom*.

**THE ROAD COMPANY** (*Tour Booking*). Founded in 1997 by Stephen Lindsay and Brett Sirota. In addition to *The Band's Visit*, current representation includes *Wicked*, *Moulin Rouge*, *Jagged Little Pill*, *Ain't Too Proud*, *Oklahoma!*, *The Prom*, *Beetlejuice*, *Fiddler on the Roof in Yiddish*, *Charlie and the Chocolate Factory*, *The SpongeBob Musical*, *Bandstand*, *The Illusionists*, and more.

**ALLAN WILLIAMS** (*Executive Producer*). A partner in Foresight Theatrical, who oversee and general manage *The Phantom of the Opera*, *King Kong*, *The Prom* and *Sea Wall/A Life*, *American Utopia* on Broadway, *Kinky Boots* and *Charlie and the Chocolate Factory*.

**SETH WENIG** (*Executive Producer*) has been with NETWORKS since its inception in 1995. He spearheaded the international tours of *Fosse* starring Ben Vereen and Ruthie Henshall. Seth has produced the Lincoln Center Theater production of Rodgers & Hammerstein's *South Pacific* and the National Theatre production of *War Horse*. Together with Cameron Mackintosh, Seth served as Executive Producer for both the U.S. and U.K. tours of the National Theatre's *My Fair Lady*, the 25<sup>th</sup> Anniversary U.S. Tour of *Les Misérables*, the new *The Phantom of the Opera* tour, *Miss Saigon* and *A Bronx Tale*. He is most proud of his greatest productions—Marlo and Camden.

**ORIN WOLF** (*Producer*). Lead producer of the *The Band's Visit* and the president of NETWORKS Presentations. Additional Broadway producing credits include *Fiddler on the Roof* (Tony nom.), *Beautiful* (Tony nom.), *Orphans* (Tony nom.), *Once* (Tony winner), *That Championship Season*, *A View From the Bridge* (Tony nom.). Initial recipient and current director of the T. Fellowship at Columbia created in conjunction with Hal Prince. For and with Shiri, Nomi and Ruben.

**STYLESFOUR PRODUCTIONS** (*Producer*). Broadway: *Beautiful* (Tony nom.), *Orphans* (Tony nom.), *Once* (Tony), *Driving Miss Daisy*, *The Pee-wee Herman Show*, *Talk Radio* (Tony nom.), *Spring Awakening* (Tony). Numerous Off-Broadway, London & tour credits. Love to Bridget, Stephanie, John Henry, Shelby & Sadie our Cavalier.

**EVAMERE ENTERTAINMENT** (*Producer*). Founded in 2007 by veteran theater and film producer John N. Hart Jr., Evamere has produced *Once*, *A Bronx Tale*, *Seminar*, and *The Glass Menagerie* starring Cherry Jones. Hart's Broadway credits include *Chicago*, *The Who's Tommy*, *Guys and Dolls* starring Nathan Lane, and *H2\$* starring Matthew Broderick. John has also produced over 20 films including *Boys Don't Cry*, *You Can Count On Me*, and *Revolutionary Road*. Evamere is joined by Austin Channell as Executive Assistant.

**ATLANTIC THEATER COMPANY** (*Producer*). Neil Pepe, Artistic Director; Jeffery Lawson, Managing Director. At Atlantic, our aim is singular—to empower simple and honest storytelling that fosters greater understanding of our shared world. We are a family of artists dedicated to exploring essential truths onstage, be it a show at Atlantic Theater Company or a class at Atlantic Acting School. Founded as an ensemble of impassioned artists in 1985, Atlantic Theater Company has grown into a powerhouse Off-Broadway company, premiering 200+ works from new and established writers. From our Tony Award and Pulitzer Prize-winning productions to our community-based education programs, we are committed to uncovering and celebrating the stories of our varied human existence.

**DAVID F. SCHWARTZ** (*Producer*). Proud to have produced *The Band's Visit* from inception with Orin Wolf. Other Broadway: *Once, Hands on a Hardbody*. Theatre/film attorney at Gray Schwartz LLP.

**BARBARA BROCCOLI** (*Producer*). Producer of the James Bond film franchise. Her stage credits include *A Steady Rain* (Broadway), *Once* (Broadway, West End), *Othello* (New York Theatre Workshop), *The Band's Visit* (Broadway) and *Fleabag* (Soho Playhouse NYC).

**FREDERICK ZOLLO** (*Producer*).

**GROVE•REG** (*Producer*). Current and recent: *The Band's Visit*, *Company* (London), *Cats* (Broadway and Tour), *On Your Feet!* (Broadway and Tour), *Escape to Margaritaville*, *Angels in America*. Upcoming: *Diana*.

**LASSEN BLUME** (*Producer*). Cody Lassen, and Brad Blume are thrilled to be co-producing *The Band's Visit*. Learn about them and their upcoming projects at [www.LassenBlumeBaldwin.com](http://www.LassenBlumeBaldwin.com).

**THOMAS STEVEN PERAKOS** (*Producer*) has performed with Connecticut's Repertory Theatre in the '60s. His theatre passion has never wavered. Perakos has produced more than 40 shows from London to Broadway. Currently a producer on *Ain't Too Proud* on Broadway.

**MARC PLATT** (*Producer*). Theatre: *War Paint*; *Wicked*; *Oh, Hello*; *If/Then*; *Three Days of Rain*. Films: *Mary Poppins Returns*, *La La Land*, *Bridge of Spies*, *Into The Woods*, *Drive*, *Wanted*, *Legally Blonde*. Television: "Jesus Christ Superstar Live in Concert," "Grease: Live!"

**THE SHUBERT ORGANIZATION** (*Producer*). Under the leadership of Philip J. Smith, Chairman, and Robert E. Wankel, President, the Shubert Organization owns and operates 17 B'way and six Off-B'way theatres, and has produced and co-produced hundreds of productions.

**THE BARUCH/ROUTH/FRANKEL/VIERTEL GROUP** (*Producer*). Steven Baruch, Marc Routh, Richard Frankel and Tom Viertel have produced 85 shows. They've won Tony Awards in all Best categories: Play, Musical, Play/Musical Revival.

**ROBERT COLE** (*Producer*) has produced more than 30 productions including the original Broadway productions of Ma Rainey's *Black Bottom*, *Angels in America* and *Once*. Recipient of five Tony Awards.

**DEROY-CARR-KLAUSNER** (*Producer*). Tony Award winners Jamie deRoy, Sharon Carr and Patricia Klausner are thrilled to be part of this timely production that underscores humanity, compassion and kindness.

**FEDERMAN-MOELLENBERG** (*Producer*). Wendy Federman and Carl Moellenberg have won 18 Tonys. Proud to be part of this exquisite musical which celebrates two cultures coming together.

**ROY FURMAN** (*Producer*). Tony Award-winning productions include: *Dear Evan Hansen*; *Hello, Dolly!*; *The Book of Mormon*; *The Color Purple*; *The Humans*; *War Horse*; *Curious Incident...*; *Spamalot* and *The History Boys*. Current: *Tootsie*, *King Kong*, *Pretty Woman*, *Mean Girls*.

**FVSL THEATRICALS** (*Producer*). Shira Friedman, Nathan Vernon, Benjamin Simpson & Joseph Longthorne. Previous credits: *A Doll's House, Part 2*; *Hello, Dolly!*; *Oh, Hello*; *Waitress*; *Fun Home*; *Peter and the Starcatcher*.

**HENDEL-KARMAZIN** (*Producer*). Ruth Hendel: *Ain't Too Proud*, *Beetlejuice*, *Mean Girls*, *Fiddler* (Yiddish), *A Walk on the Moon*. Sharon Karmazin is a Tony-winning producer. Current: *Dear Evan Hansen* and *Ain't Too Proud*.

**HORIPRO INC.** (*Producer*). Founded by Takeo Hori in 1960. One of the leading Japanese entertainment companies, representing musicians & actors, producing films & TV programs besides its successful theatrical works.

**INDEPENDENT PRESENTERS NETWORK** (*Producer*). A consortium of 40 of the leading touring Broadway presenters in cities throughout America. Recent Broadway shows: *Dear Evan Hansen*; *Hello, Dolly!*; *On Your Feet!*; *Waitress* and *Kinky Boots*.

**JAM THEATRICALS** (*Producer*). Under the direction of co-founder Steve Traxler, presents Theater series in 26 cities, produces on Broadway and is the recipient of 10 Tony Awards.

**THE JOHN GORE ORGANIZATION** (*Producer*). Owned by 11-time Tony-winning producer John Gore. It includes Broadway Across America, Broadway.com and The Broadway Channel.

**JAMES L. NEDERLANDER** (*Producer*). President of Nederlander Organization. *Tootsie*, *Oklahoma*, *My Fair Lady*, *On Your Feet*, *The Humans*, *The Elephant Man*, *Movin' Out*, the upcoming *Tina* among many others.

**AL NOCCIOLINO** (*Producer*). President of NAC Entertainment, a theatrical company specializing in the presentation of touring Broadway shows. He has been presenting and producing Broadway shows for over 35 years.

**IRIS SMITH** (*Producer*). CEO of Once Upon a Time Productions. B'way: *On Your Feet!*, *Dangerous Liaisons*. Film: *People You May Know*, *Wakefield*.

**SUSAN ROSE** (*Producer*). Tony-winning and Emmy-nominated producer. Member of the Academy of Television Arts and Sciences and the Producers Guild of America.

---

**Opening Night: June 27, 2019**

---

**STAFF FOR *THE BAND'S VISIT***

---

**EXECUTIVE PRODUCERS**

Allan Williams  
Seth Wenig

---

**MANAGEMENT CONSULTANT**

FORESIGHT THEATRICAL  
Allan Williams Jalaina Ross  
Aaron Lustbader Mark Shackel

---

**GENERAL MANAGEMENT**

GENTRY & ASSOCIATES  
Gregory Vander Ploeg  
Steve Varon  
Pearce Landry-Wegener Nicole Gehring

---

**PRODUCTION MANAGEMENT**

NETWORKS PRESENTATIONS  
Jason Juenker  
Hector Guivas Evan Rooney  
Walker White Emma Downey

---

**MARKETING AND PUBLICITY DIRECTION**

BOND THEATRICAL GROUP  
DJ Martin Temah Higgins Mollie Mann  
Marc Viscardi Matthew Lerner Nicole Musto  
Nicholas Jaech Trish McKeon Wendy Roberts  
Tori Viggiano Tammie Ward

---

**EXCLUSIVE TOUR DIRECTION**

THE ROAD COMPANY  
Stephen Lindsay Brett Sirota  
trc.nyc

---

**CASTING**

TARA RUBIN CASTING  
Tara Rubin, CSA Merri Sugarman, CSA  
Kaitlin Shaw, CSA Laura Schutzel, CSA  
Clare Burke, CSA Peter Van Dam, CSA  
Felicja Rudolph, CSA Xavier Rubioano, CSA  
Louis DiPaolo, Kevin Metzger-Timson, Juliet Auwaeter

---

**COMPANY MANAGER:** Chris Danner

**Assistant Company Manager:** David Haines

---

Production Stage Manager ..... John M. Atherlay  
Stage Manager ..... Nikki Lint  
Assistant Stage Manager ..... Shelby Stark  
Associate Directors ..... Seth Sikes, Zi Alikhan  
Associate Choreographer ..... Jesse Kovarsky  
Associate Scenic Designer ..... Jerome Martin,  
Gabriel Firestone  
Associate Costume Designer ..... Justin Hall

Associate Lighting Designer ..... Kirk Fitzgerald  
Assistant Lighting Designer ..... Joel Britt  
Associate Sound Designers ..... Josh Millican,  
J. Patrick Pummill  
Associate Projection Designer ..... Stivo Arnozy  
Associate Hair Designer ..... Rachael Geier  
Production Electricians ..... Stephen Atwell,  
Christopher Nimm  
Production Sound ..... Reece Nunez  
Production Properties ..... Eric Reynolds  
Moving Light Programmer ..... Jay Penfield  
Video Programmer ..... Ido Levrant

**TOURING CREW**

Head Carpenter ..... Joseph Spratt  
Flyman ..... Jesse Van Swol  
Assistant Carpenter/Automation ..... Lisa LePoidevin  
Assistant Carpenter/Deck ..... Kasey Walraven  
Head Electrician ..... Joel Bulthuis  
Assistant Electricians ..... Timothy Mack,  
Liam Lewis-Marlow  
Head Sound ..... Colin Braeager  
Assistant Sound ..... Gavin Little  
Head Props ..... Anna Katharine Mantz  
Wardrobe Supervisor ..... Emily Staloch  
Assistant Wardrobe ..... Lyndsi Sager  
Wig and Make-Up Supervisor ..... Karmen Otto

Production Consultant ..... Ashley-Rose Galligan  
Gaga Dance Instructor ..... Or Schraiber  
Arabic Dialect Coach ..... Ronnie Malley  
Israeli Dramaturg & Dialect Coach ..... Zohar Tirosh-Polk  
Production Assistants ..... Brandon Allmon-Jackson,  
Kate M.Carolan, Eric Nolan Mattingly,  
Claire E. Murphy, Jacob Stuckelman  
Electronic Music Design ..... Billy Jay Stein, Hiro Iida  
Physical Therapy ..... NEURO TOUR Physical Therapy, Inc.  
Advertising/Marketing Materials ..... AKA  
Video Production ..... HMS Media  
Production Photographer ..... Matthew Murphy  
Social Media ..... Andy Drachenberg  
Merchandising ..... Matt Murphy Productions, LLC  
Legal Services ..... Rick Pappas, Esq.  
Accounting ..... NETWORKS Presentations LLC  
HR & Payroll Services ..... Human Resources inc  
Housing ..... Road Concierge, an ALTOUR Company  
Travel Agency ..... Janice Kessler,  
Carson Wagonlit Travel  
Trucking ..... Clark Transfer

**TAX AND FINANCIAL CONSULTING,**

**ACCOUNTING SERVICES**

CliftonLarsonAllen LLP  
Brian Inverso, Kathleen Thies

**INSURANCE BROKER SERVICES**

Maury Donnelly and Parr, Inc.  
Robert B. Middleton, Sr. and Meghan Coleman

---

*The Band's Visit* is presented through special arrangement with  
**MUSIC THEATRE INTERNATIONAL**, New York, NY.  
www.mtishows.com

---

**FINANCIAL SERVICES AND  
BANKING ARRANGEMENTS BY**  
SunTrust Bank

Rehearsed at The New 42nd Street Studios

### CREDITS

Band uniforms by John Kristiansen New York, Inc./

John Kristiansen Brian Blythe, Custom painting: Jeff Fender.  
Lighting equipment: PRG Lighting. Audio equipment: PRG  
Audio. Scenic items fabricated, and show control and scenic  
motion control featuring Stage Command Systems® by PRG-  
Scenic Technologies, a division of PRG Broadway, L.L.C.,  
New Windsor, NY. Props: BrenBri Properties, Prop N Spoon.

Drum kit courtesy of Garrison at  
Drum Workshop.

### SPECIAL THANKS TO

Providence Performing Arts Center - Norbert Mongeon &  
J.L. "Lynn" Singleton, The Consulate General of Israel in NY,  
Israel's Office of Cultural Affairs, Darisu Suyama,  
45th St Fund, Rebecca Stone, Maxwell Williams, Tom Hulce,  
Lameece Isaac, Hartford Stage, Harold Prince, Ellen Pilipski,  
Joshua Pilipski, Sarah Pilipski, Gabrielle d'Entremont

[www.TheBandsVisitMusical.com](http://www.TheBandsVisitMusical.com)



@TheBandsVisit  
#TheBandsVisit



The Actors and Stage Managers employed in this production are members of Actors' Equity Association, the Union of Professional Actors and Stage Managers of the United States.



The Musicians employed in this production are members of the American Federation of Musicians of the United States and Canada.



The Director and Choreographer are members of the Society of Stage Directors and Choreographers, Inc., an independent national labor union.



The Press Agents and Company Managers employed in this production are represented by the Association of Theatrical Press Agents & Managers.



Backstage employees are represented by the International Alliance of Theatrical Stage Employees (or I.A.T.S.E.).



United Scenic Artists represents designers and scenic artists for the American Theatre.

**LUCKY YOU, YOU VISITED  
BET HATIKVA - WITH A "B"!**

SHARE YOUR EXPERIENCE WITH US ON SOCIAL.



Peace Center



@PeaceCenter



@PeaceCenter

Follow along all season with #PCBroadway.